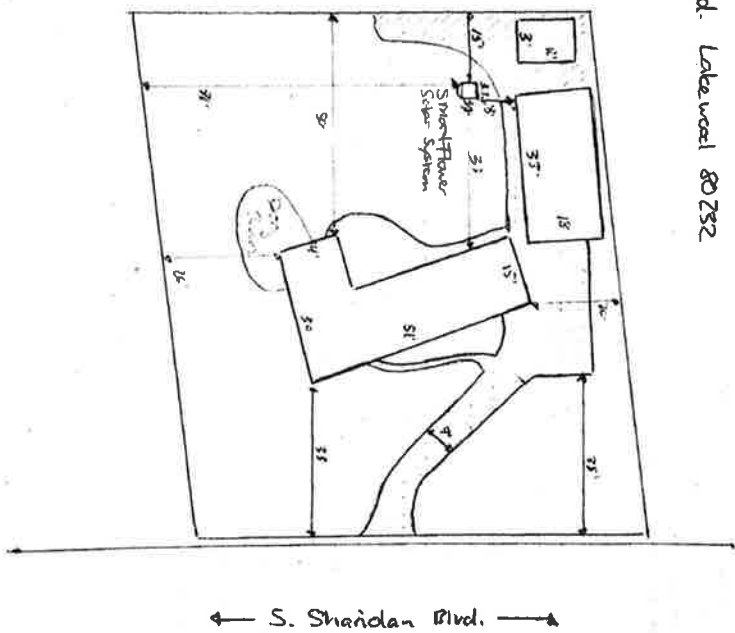






Site Plan

1755 S. Sheridan Blvd. Lot 252



-  Concrete/Asphalt
-  Structure
-  Landscape Area
Rock, Shrubs & Plants
-  Unmarked area is grass

20ft
1/4 in = 5ft



Meeting Criteria



- The SmartFlower would be a superior development for a few reasons and will better serve the intent of the zone district because:
 - It would allow the installation of the next generation of solar systems in residential areas.
 - It takes up half the amount of ground as a traditional solar installation and it does not require the use of the owners roof.
 - The installation of the SmartFlower will add to Lakewood's plan to become a more sustainable community in the years to come.
 - It produces 40% more energy with a smaller mounting footprint than the traditional solar systems.

