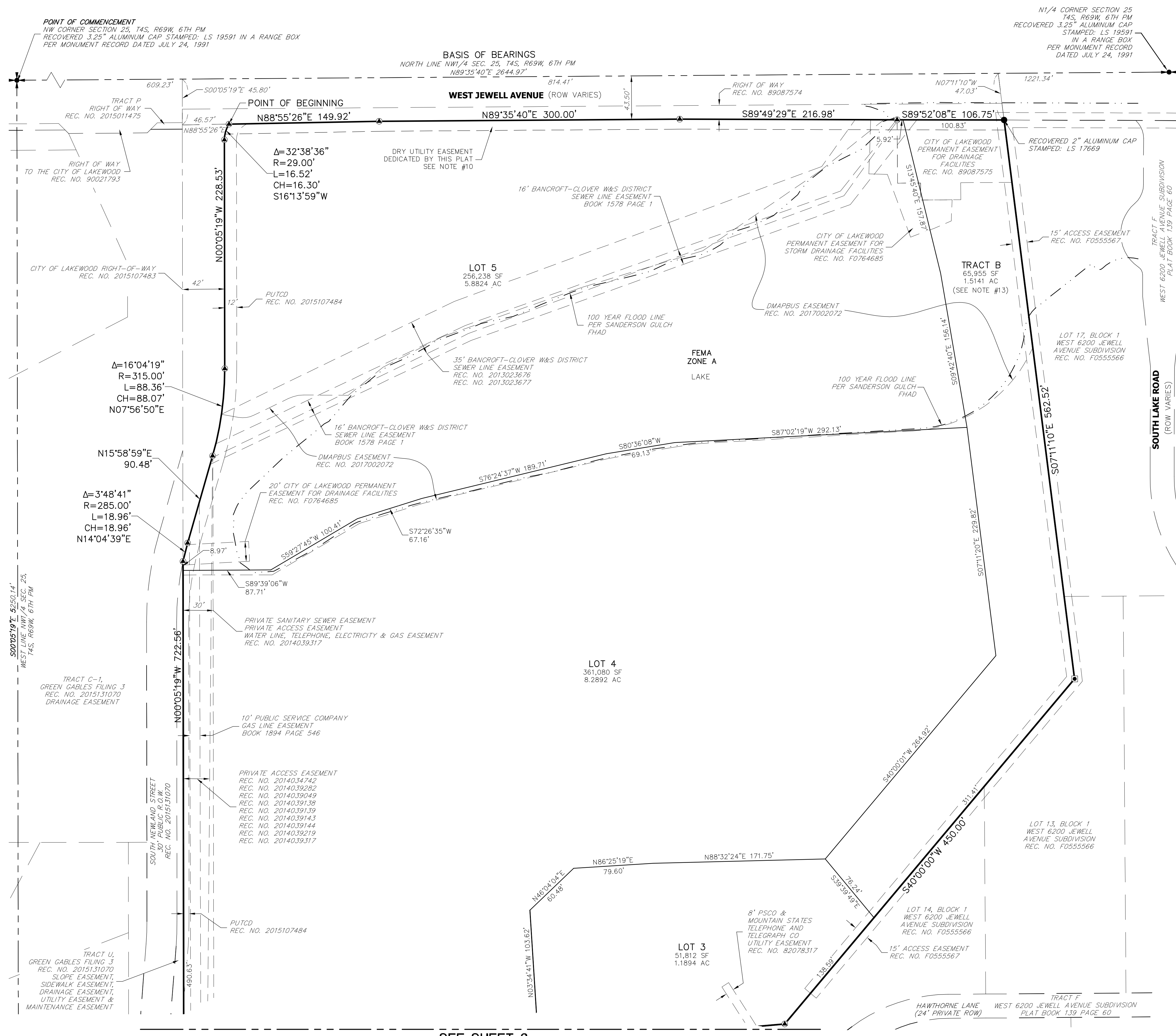




RECEPTION NO.

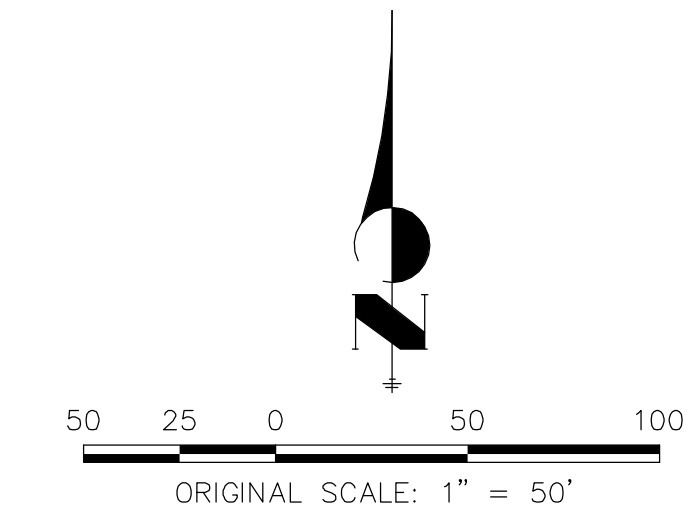
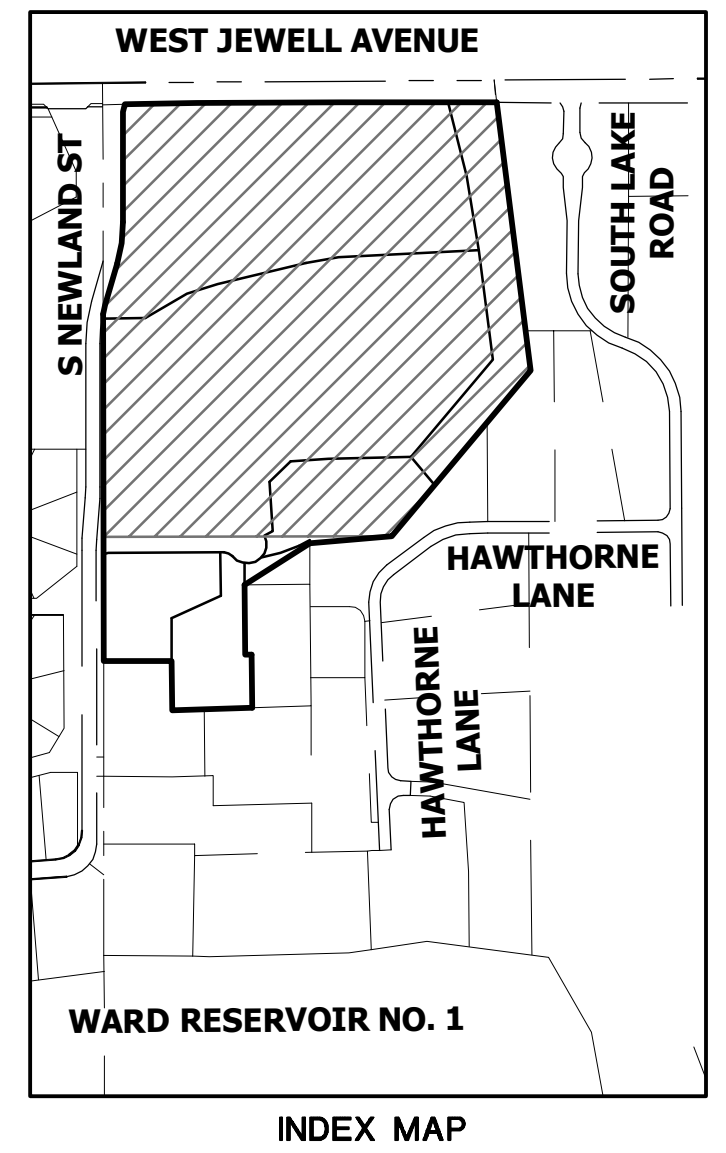
# LAKERIDGE SUBDIVISION FILING NO. 3

**LOTS 5-7, TRACTS A & B, LAKERIDGE FILING NO. 2,  
LOCATED IN THE NORTHWEST ONE-QUARTER OF  
SECTION 25, TOWNSHIP 4 SOUTH, RANGE 69 WEST OF  
THE SIXTH PRINCIPAL MERIDIAN, CITY OF LAKEWOOD,  
COUNTY OF JEFFERSON, STATE OF COLORADO**  
**FINAL PLAT  
SHEET 2 OF 3**



**LEGEND**

◻	RECOVERED 1-1/2" ALUMINUM CAP STAMPED: PE-PLS 5447
●	RECOVERED MONUMENT AS SHOWN
▲	RECOVERED NO. 5 REBAR WITH 1-1/2" ALUMINUM CAP STAMPED: JR ENG PLS 38252
○	SET 18" LONG NO. 5 REBAR WITH 1-1/2" ALUMINUM CAP STAMPED: JR ENG PLS 38252
REC. NO.	RECEPTION NUMBER
SF	SQUARE FEET
AC	ACRES
(R)	RADIAL BEARING
W&S	WATER & SANITATION
DMAPBUS	DRAINAGE, MAINTENANCE, ACCESS, PEDESTRIAN, BICYCLE, UTILITIES & SIGNAGE EASEMENT
PUTCD	PEDESTRIAN, UTILITY & TRAFFIC CONTROL DEVICE EASEMENT
—	BOUNDARY LINE
—	LOT LINE
—	ADJACENT PARCEL/ROW LINE
—	EASEMENT
—	MATCH LINE
—	SECTION LINE
—	ALIQUOT SECTION LINE
—	FLOODPLAIN LINE



JOB NO. 15740.01  
NOVEMBER 1, 2018

**J-R ENGINEERING**  
A Westrian Company

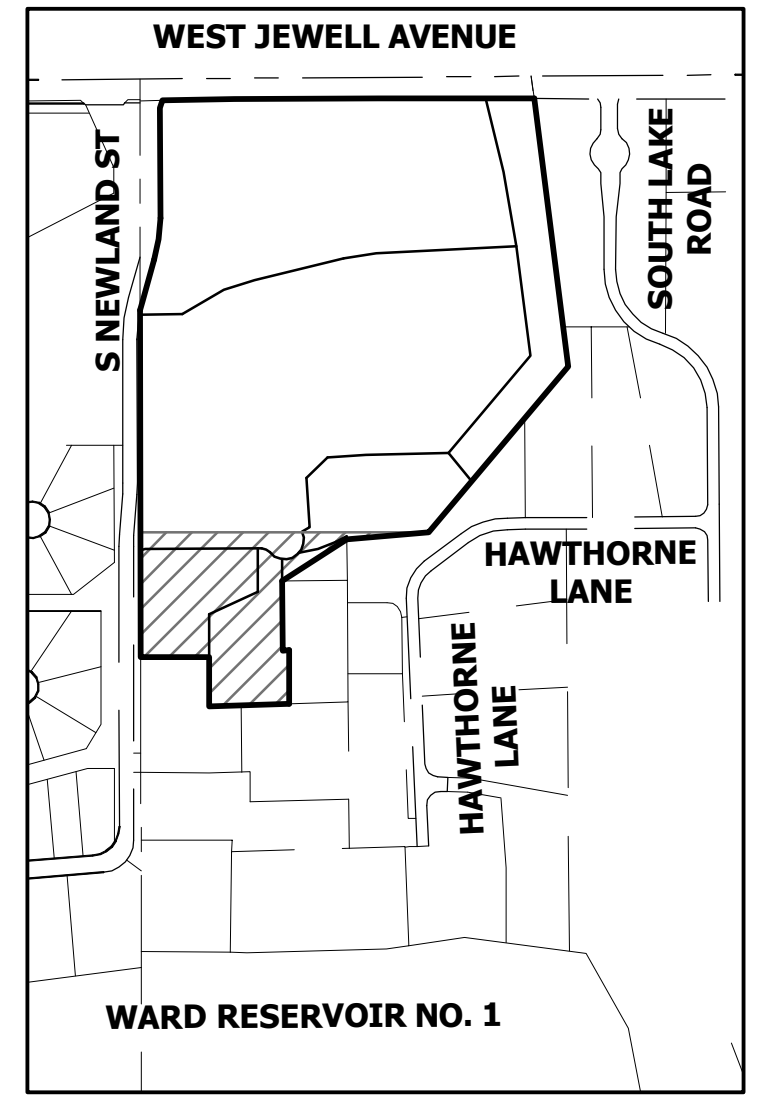
Centennial 303-740-9393 • Colorado Springs 719-593-2593  
Fort Collins 970-491-9888 • www.jrengineering.com

**SHEET 2 OF 3**  
**FI-18-007 49-252**  
**LAKERIDGE SUBDIVISION FILING NO. 3**

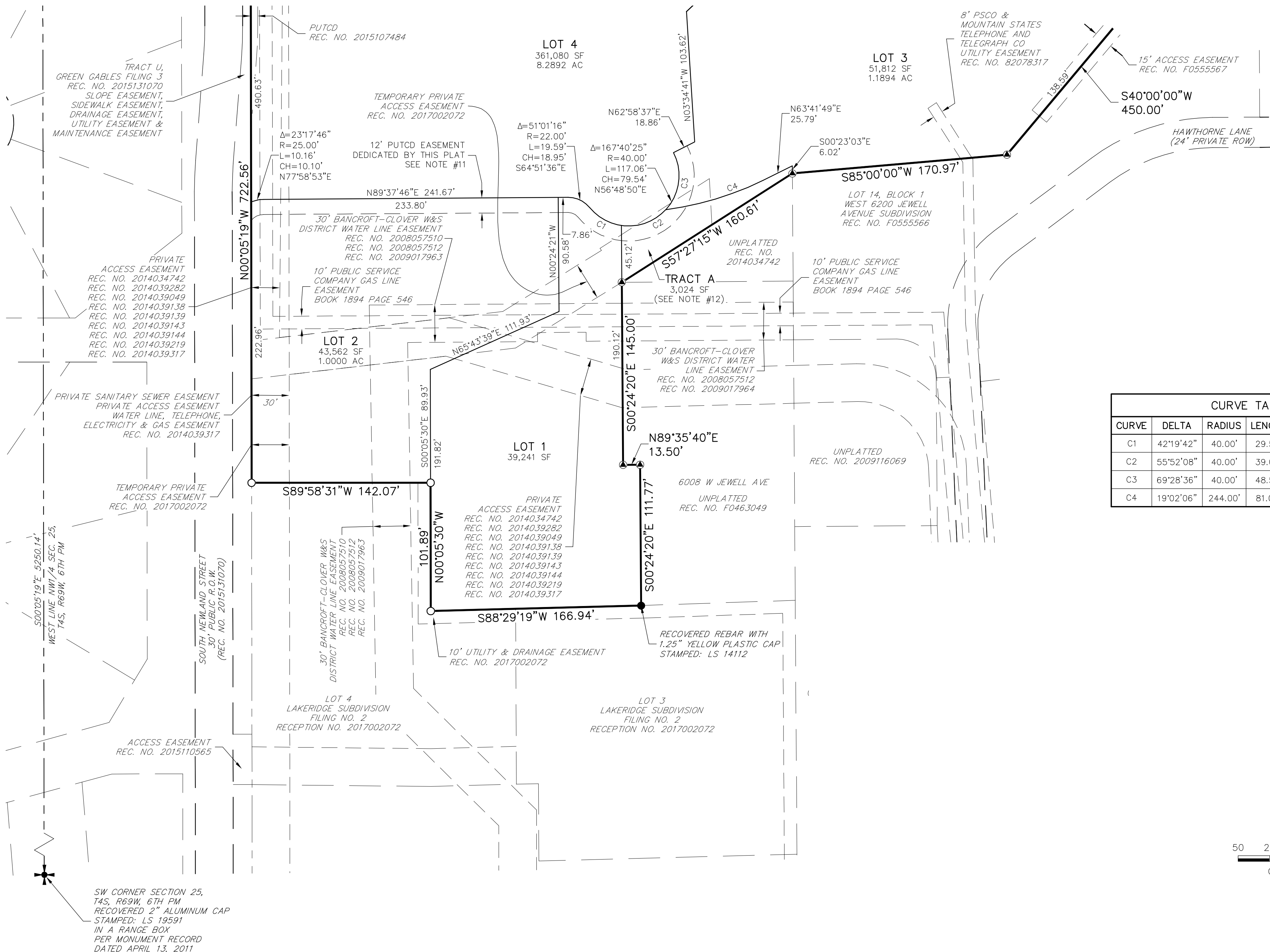
SEE SHEET 3

RECEPTION NO.

**LAKERIDGE SUBDIVISION FILING NO. 3**  
**LOTS 5-7, TRACTS A & B, LAKERIDGE FILING NO. 2,**  
**LOCATED IN THE NORTHWEST ONE-QUARTER OF SECTION 25,**  
**TOWNSHIP 4 SOUTH, RANGE 69 WEST OF THE SIXTH PRINCIPAL MERIDIAN,**  
**CITY OF LAKEWOOD, COUNTY OF JEFFERSON, STATE OF COLORADO**  
**FINAL PLAT**  
**SHEET 3 OF 3**

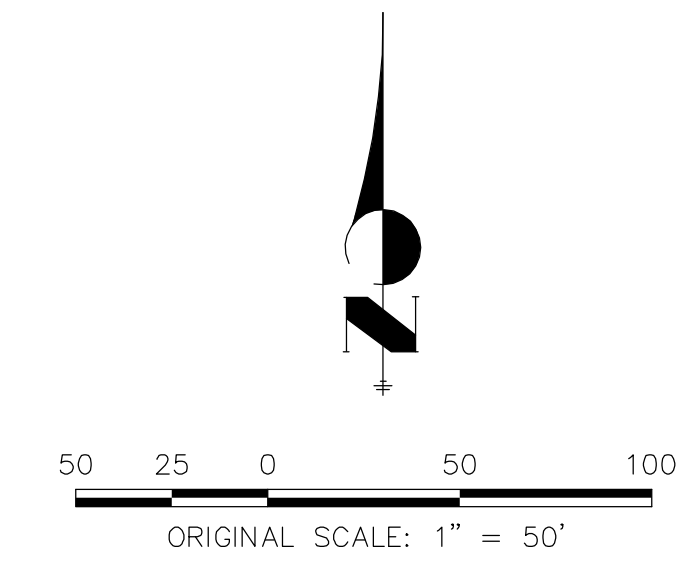


SEE SHEET 2



CURVE TABLE				
CURVE	DELTA	RADIUS	LENGTH	CHORD
C1	42°19'42"	40.00'	29.55'	S60°30'48"E 28.88'
C2	55°52'08"	40.00'	39.00'	N70°23'17"E 37.48'
C3	69°28'36"	40.00'	48.50'	N07°42'55"E 45.59'
C4	19°02'06"	244.00'	81.06'	N73°12'52"E 80.69'

- LEGEND**
- RECOVERED 1-1/2" ALUMINUM CAP STAMPED: PE-PLS 5447
  - RECOVERED MONUMENT AS SHOWN
  - ▲ RECOVERED NO. 5 REBAR WITH 1-1/2" ALUMINUM CAP STAMPED: JR ENG PLS 38252
  - SET 18" LONG NO. 5 REBAR WITH 1-1/2" ALUMINUM CAP STAMPED: JR ENG PLS 38252
  - REC. NO. RECEPTION NUMBER
  - SF SQUARE FEET
  - AC ACRES
  - (R) RADIAL BEARING
  - W&S WATER & SANITATION
  - DMAPBUS DRAINAGE, MAINTENANCE, ACCESS, PEDESTRIAN, BICYCLE, UTILITIES & SIGNAGE EASEMENT
  - PUTCD PEDESTRIAN, UTILITY & TRAFFIC CONTROL DEVICE EASEMENT
  - BOUNDARY LINE
  - - - LOT LINE
  - - - ADJACENT PARCEL/ROW LINE
  - - - EASEMENT
  - - - MATCH LINE
  - - - SECTION LINE
  - - - ALIQUOT SECTION LINE
  - - - FLOODPLAIN LINE



JOB NO. 15740.01  
 NOVEMBER 1, 2018



Centennial 303-740-9393 • Colorado Springs 719-593-2593  
 Fort Collins 970-491-9888 • www.jrengineering.com